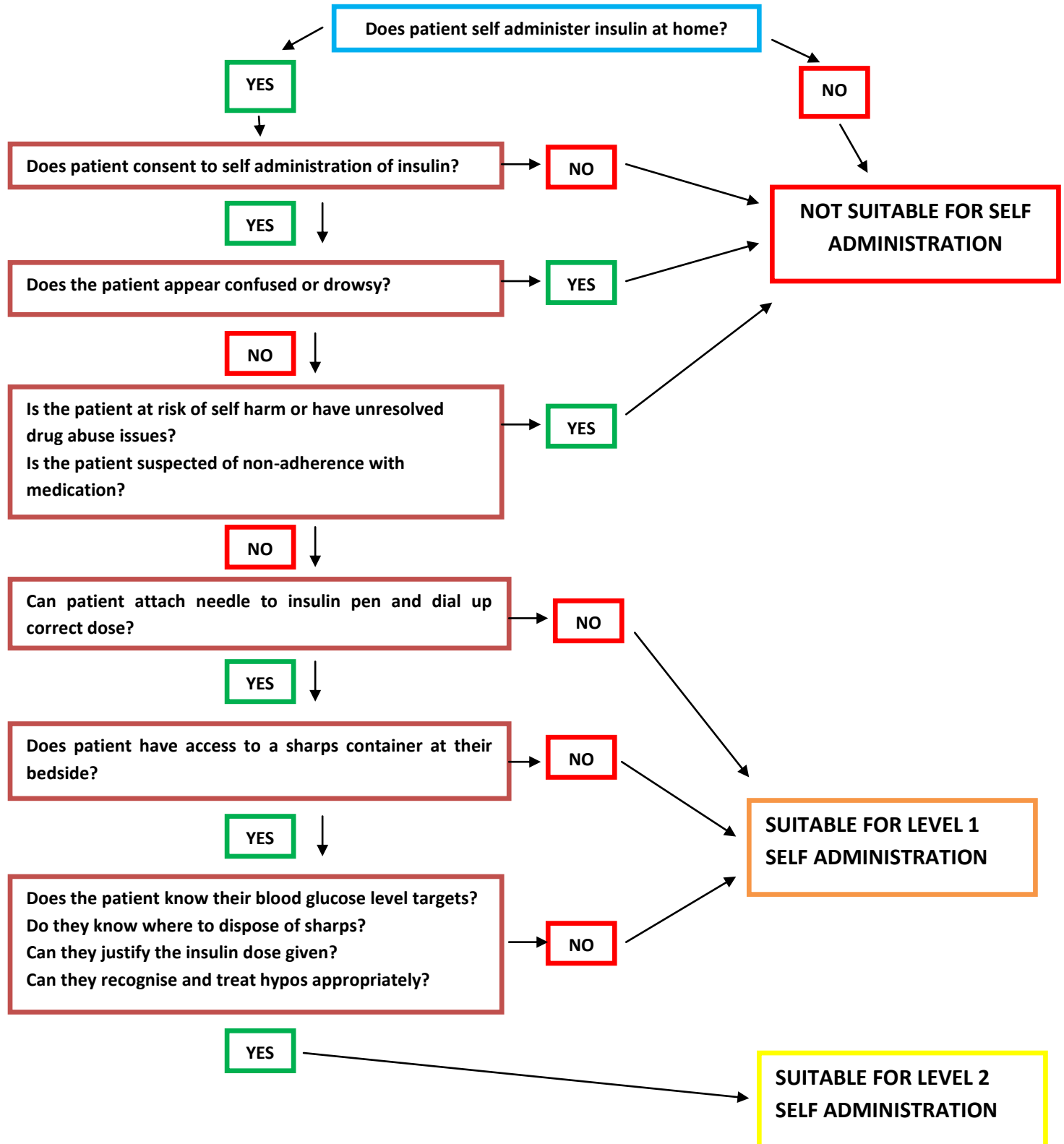


ASSESSING ADULT PATIENTS FOR SELF ADMINISTRATION OF INSULIN WHILST IN HOSPITAL

For use by Nursing and pharmacy staff in conjunction with UHS patient self administration of medicines policy



LEVEL 0	Nurse: Administer insulin and monitor blood glucose levels Patient: Not suitable for self administration
LEVEL 1	Nurse: Inform patient how much insulin to take, dial dose, attach needle and monitor blood glucose levels Patient: Self administer insulin
LEVEL 2	Nurse: Monitor blood glucose levels Patient: Selects dose of insulin and self administer insulin